



AIR-DRIVEN MICA-MILLERS For Tungsten-Carbide Saws
AIR MOTOR INSTRUCTIONS & PARTS LIST
M-MU202C, M-MU202C7M, M-MU203C

MOTOR:

The motor operates at air pressures from 80 to 90 lbs. A Martindale Automatic Filter-Lubricator must be used to keep the motor adequately lubricated. Failure to do so will void warranty. Disconnect the air supply when changing cutters.

HEADS:

Three heads are easily and quickly interchangeable on the motor unit. Saw and V-cutter diameters used are: 23/32" or 3/4" for Small Head, 7/8" or 1" for Standard Head, and 1-1/8" or 1-1/4" for Heavy-Duty Head. Use the wrenches provided for changing saws.

Slot guides are furnished on the Small and Standard Heads, although, as an operator becomes familiar with the operation of the machine the slot guide is usually removed. To adjust for height and width release the thumb screw, make the necessary adjustments, and re-tighten thumb screws. Depth of cut is determined by the setting of the depth gauge behind the saw. Be sure the thumb screw is tight.

The head may be removed by taking out the horizontal screw on top. A slight twist, and the head will come off. After every 25 hours of operation wipe some good quality light grease on the gears.

OPERATION:

Start the cut at the riser and pull the Mica-Miller toward you. A little care must be taken to start the saw in the slot, but once started it will tend to follow the slot. Sighting along the mica toward the saw will help keep the saw in the center of the slot. Experience will determine the proper cutting rate. When the saw or V-cutter gets dull, change it.

SAWS & V-CUTTERS:

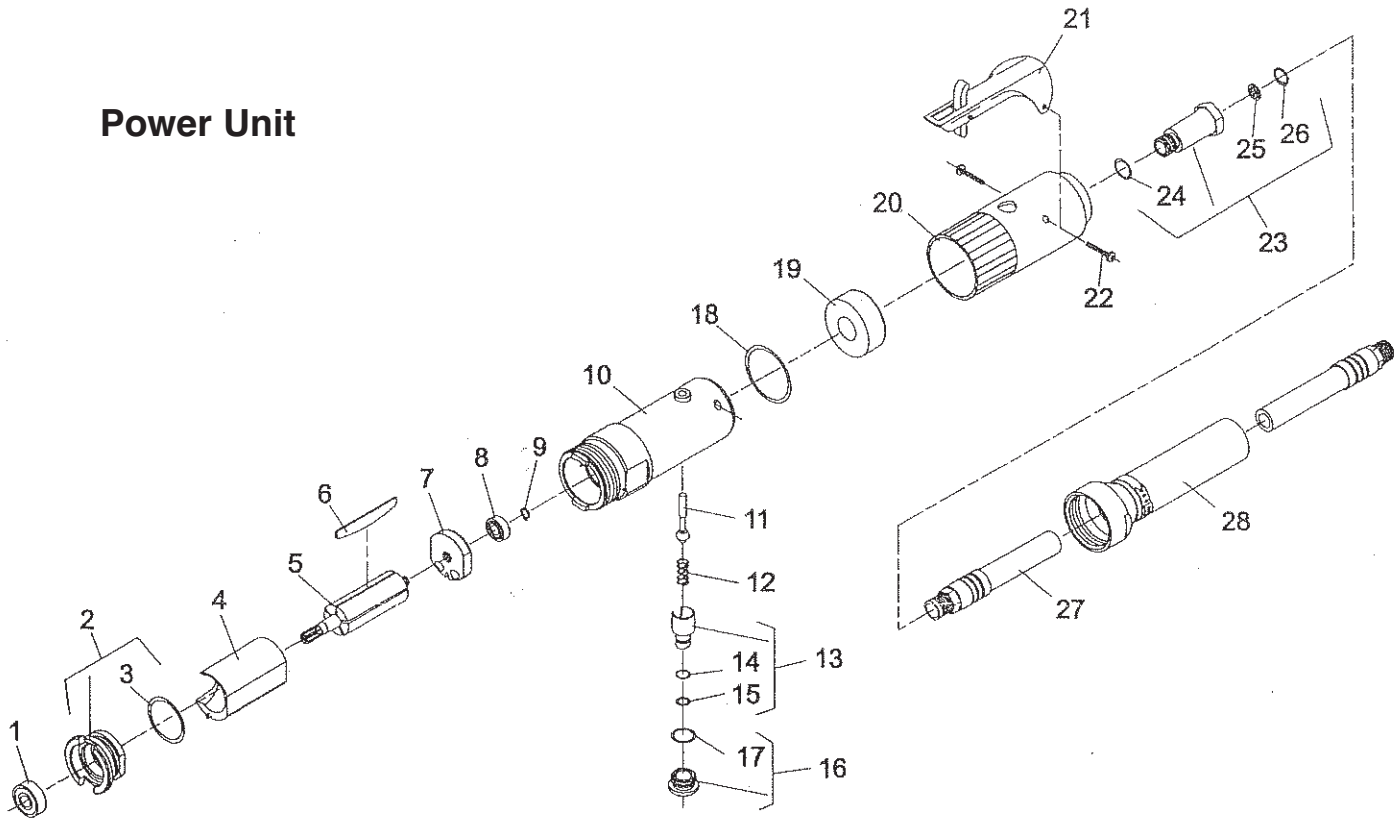
Saws cut a "U" shaped slot. V-cutters are beveled and cut a "V" shaped slot which stays clean longer under unfavorable conditions. High Speed Steel Saws are stocked in 21 thicknesses from .015" to .065", V-cutters are .045" thick and are stocked with 40°, 50°, and 60° between cutting edges.

AIR DRIVEN MICA-MILLER
AIR MOTOR PARTS LIST For Tungsten-Carbide Saws
M-MU202C, M-MU202C7M, M-MU203C

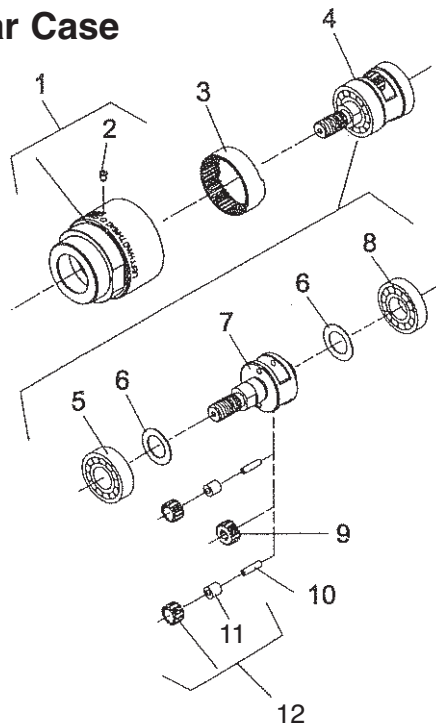
Quantity	Index No.	Description	Part No.
Power Unit			
1	1	Bearing, Ball	M-MU10220
1	2	Plate, Front End	M-MU13550
1	3	Ring, "O"	M-MU14342
1	4	Cylinder	M-MU64057
1	5	Rotor (5800RPM)	M-MU54860
1	6	Vane Assembly, Rotor (Set of 5)	M-MU63192
1	7	Plate, Rear End	M-MU10552
1	8	Bearing, Ball	M-MU10230
1	9	Ring, Retaining	M-MU21491
1	10	Housing	M-MU64036
1	11	Valve Assembly	M-MU63241
1	12	Spring	M-MU21427
1	13	Control, Speed	M-MU54843
1	14	Ring, "O"	M-MU14394
1	15	Ring, "O"	M-MU14291
1	16	Retainer, Speed Control	M-MU54844
1	17	Ring, "O"	M-MU14309
1	18	Ring, "O"	M-MU14333
1	19	Material, Exhaust	M-MU40116
1	20	Cover, Housing	M-MU04042
1	21	Lever	M-MU63258
2	22	Screw, Pan Hd., Selftap, #6-32 x 3/4	M-MU65499
1	23	Adaptor, Intake	M-MU54837
1	24	Ring, "O"	M-MU14312
1	25	Screen	M-MU30463
1	26	Ring, Retaining	M-MU21541
1	27	Hose Assembly, Exhaust	M-MU63355
1	28	Hose, Leader	M-MUH1317
		Not Shown: Handle, Auxilliary Handle Assembly, Lever (Non-Rev) (Includes Index #'s 10-20 & 22-26)	M-MU2362 M-MU63444
Single Reduction Gear Case			
1	1	Case, Gear	M-MU65144IP
1	2	Fitting, Grease	M-MU30375
1	3	Gear, Ring	M-MU19265
1	4	Reduction Assembly, Planetary (5800RPM)	M-MU65945IP
1	5	Bearing, Ball	M-MU10228
2	6	Washer	M-MU25439
1	7	Carrier, Gear (5800RPM)	M-MU65942IP
1	8	Bearing, Ball	M-MU10203
1	9	Gear, Pinion (5800RPM)	M-MU19267
2	10	Pin	M-MU30062
2	11	Bearing, Needle	M-MU10040
2	12	Gear & Bearing Assembly	M-MU19331

AIR DRIVEN MICA-MILLER
AIR MOTOR PARTS LIST For Tungsten-Carbide Saws
M-MU202C, M-MU202C7M, M-MU203C

Power Unit

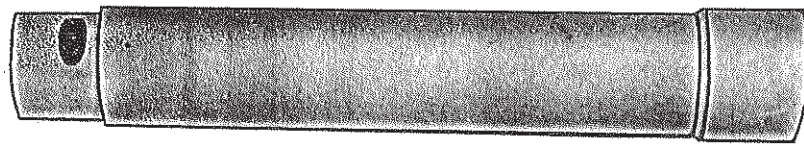


Single Reduction Gear Case

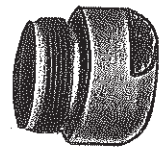


AIR DRIVEN MICA-MILLER EXTENSION Parts List

Quantity	Description	Part No.
1	Shaft Housing	M-MUD745
1	Shaft	M-MUD746
1	Adaptor	M-MUD747
1	Bearing	M-MU78ZZ
1	Bearing	M-MU87038
1	Gear	M-MUH2010L
1	10-32x3/8 Flat Hd. Screw	M-MU29
1	Pin	M-MU47



M-MUD745



M-MUD747

M-MU87038



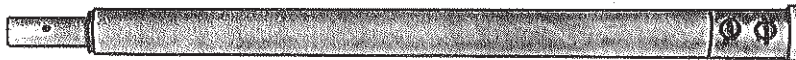
M-MUD78ZZ



M-MU29



M-MUH2010L



M-MUD746

M-MU47